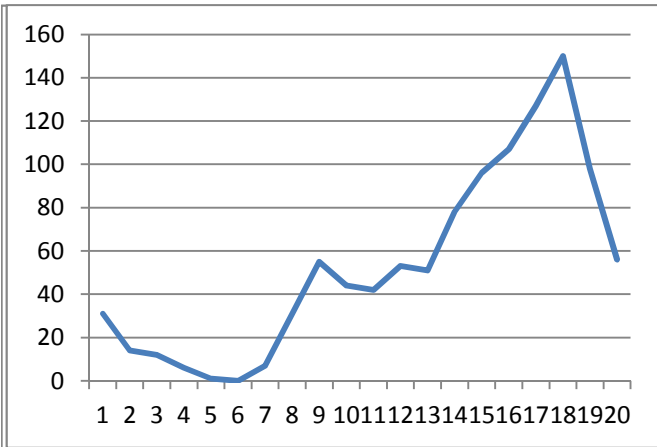


Flat surface

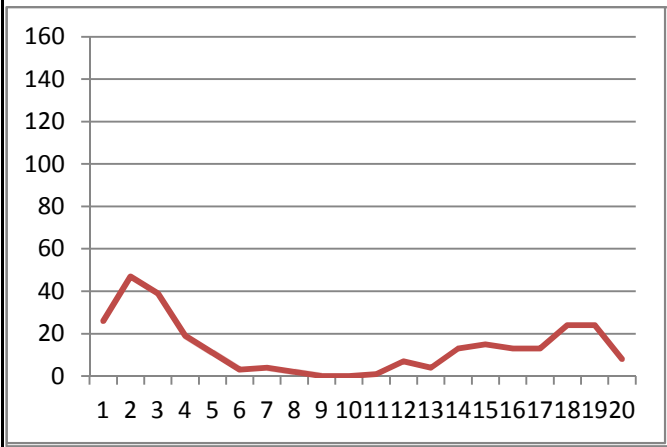
Histograms and rasters are triggered from the beginning of swing of the right forelimb

Stride cycles are time normalized

See our publications for a complete description of selection of strides

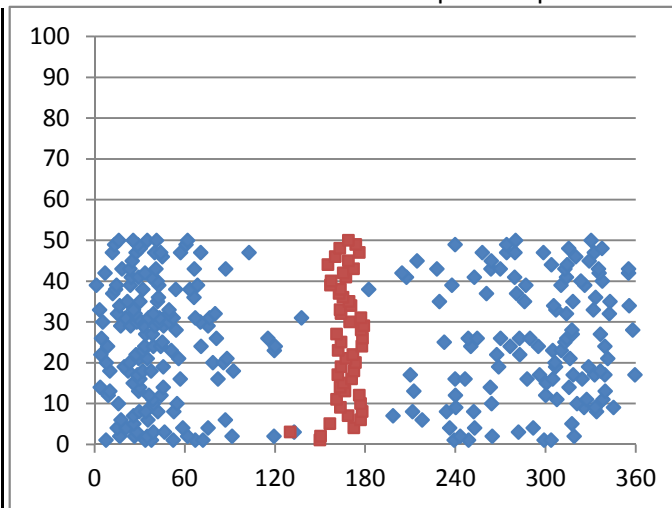


Ladder 5



In the rasters, blue diamonds depict spikes, red squares indicate beginning of stance phase in each stride
The first 2 rasters show steps as they were recorded in time: the later one are toward the top of the plot

very easy to create, but
was not immediately available
at the time of data uploading



The 2 rasters below show steps rankordered according to duration of the swing phase

